

Finlay

GROUP CONSTRUCTION PTY LTD



Finlay Group Construction Pty Ltd

Company

Profile

Finlay Group Construction Pty Ltd
Unit 3, 1 President Street, Welshpool WA 6106
Ph: 9470 5377 | Fax: 9470 5477
Builders Reg. 102236 | ABN: 37 609 720 158

INTRODUCTION

ABOUT US

Finlay Group Construction Pty Ltd specialises in commercial & industrial projects, interior fit out, refurbishment and complete construction management. Our business has been built on a strong foundation of performance, team management, efficient processes and the ability to deliver a high-quality finished asset to our Clients.

ORIGINS

The Finlay brand was founded by directors Xavier McKeon and Enzo Scarvaci in 2004. Finlay Group Construction have met repeated success and have grown at a remarkable rate

SERVICES AND PROJECT APPROACH

Our core competency is in managing commercial construction activities. Important building details are established long before construction begins.

Accelerated business environments place greater demands on the entire project therefore it is critical to build a suitable project team who will successfully deliver in the early stages of a vision. Once our clients have committed, we create a management team that will make a positive difference to the success of their project. Our experienced construction management team will liaise with you to make the necessary decisions involving project objective, schedule, budget, fabric and compliance.

SERVICES WE OFFER:

Our expertise is in creating competitive advantage through our relationship-based approach to enhance value, reduce cost and meet aggressive schedules that the marketplace demands.

Our expertise is in the following fields:

- ✓ Complete project management
- ✓ Design & Construct
- ✓ Contracts Administration
- ✓ Risk management analysis
- ✓ Construction scheduling
- ✓ Cost and payment control
- ✓ Management and reporting
- ✓ Commissioning and warranty management



ABOUT US

“Strength, stability, hard work, discipline, knowledge and loyalty is our foundation”

BUSINESS MODEL

Finlay Group Construction’s unique business model embraces our client focused, relationship-based approach aimed at maximum optimization and development throughout each cycle whilst refining, and above all, maintaining focus and commitment through each stage of the planning and development process. The initial focus is on creating value for our Clients. At Finlay Group Construction we believe that value can only be created by working jointly and closely with our Clients, seeking their input and ideas at all stages of the project in order to provide an end product that meets their demands yet exceeds their expectations. Through constant liaison and consultation with our Clients throughout the construction phase of the project, we strengthen Client confidence, improve profitability and provide market advantage for both parties.

EXPERTISE

Our expertise is in creating competitive advantage through our relationship-based approach to enhance value, reduce cost and meet aggressive schedules that the market place demands.

Our expertise is in the following fields:

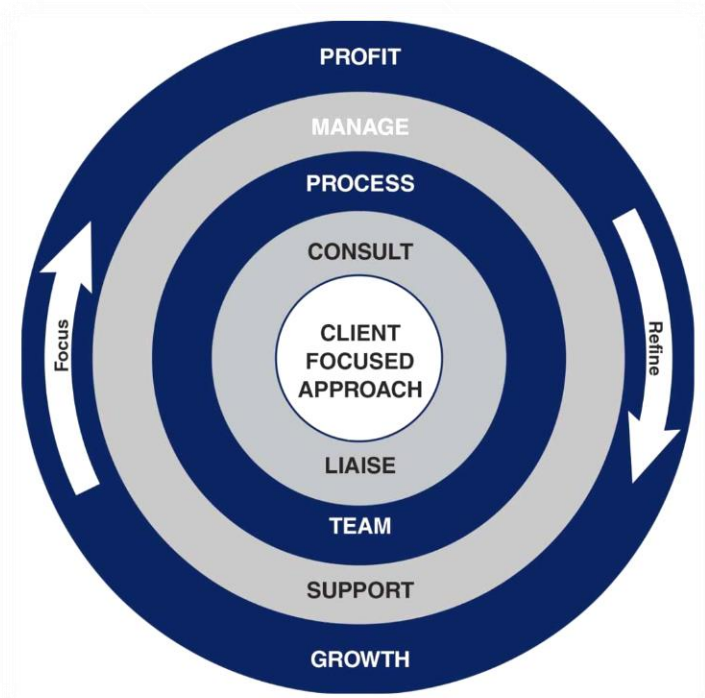
- ✓ Project Strategy
- ✓ Construction Management
- ✓ Project Delivery
- ✓ Risk Management Analysis
- ✓ Commissioning and Warranty Management

OUR TEAM AND OUR CULTURE

Here at Finlay Group Construction, we are known for our people and the quality of the team we employ. We understand that the construction industry is all about people and how we manage our team.

Finlay Group Construction places great value on long term employment and loyal employees. We believe in investing in our team progress, we know we employ the best team we can to share in the success of our company.

We believe all our employees support and are committed to our vision. They embrace our mission and work hard as a team with a passion for excellence. Our culture and environment is continually nurtured as a valuable area where each individual is supported and encouraged to develop and grow, which in turn, creates opportunities to build the future as a team.



REASONS TO USE FINLAY GROUP CONSTRUCTION



Partnership Approach

We conduct our operations in a manner designed to strengthen relationships with our clients by taking an ownership approach and assisting in the successful delivery of the project.

We Make A Difference

We strive to offer engineered solutions with close collaboration and consultation with our client and architectural teams in the design stages of your project.



On Time, On Budget

We offer the latest in construction programmes & work to demanding schedules. We pride ourselves on compliance of project objectives within our clients' budget and delivering the project on time or ahead of schedule.

The Right People

Once our clients have committed, we create a specifically assembled Site Management team that will provide the keys skills and quality of work required to meet project objectives.



Tight Management

Our experienced people in key management roles operate efficient and proven processes that are controlled and monitored to ensure quality, safety and environmental compliance.

Understanding

Our senior management team will demonstrate a thorough understanding of the project scope and will actively deliver the project beyond industry standards



KEY PEOPLE

“Here at Finlay Group we are known for our people and the quality of the team we employ”



Enzo Scarvaci
Director

Enzo leads our project teams and site operations ensuring safety standards, work standards and management of the projects and work programs are all executed to meet the high level of expectation.



Xavier McKeon
Managing Director

Xavier leads the team at Finlay Group and is responsible for business development, client relationships, company growth and overseeing operations.



Mark Hill
Project Manager/Estimator

Mark is responsible for administering the tender process, executing contracts, compliance with regulatory bodies and scheduling projects.



Barry Milne
Site Supervisor

Barry manages/supervises a wide range of fitouts in commercial, residential and industrial environments. Barry consistently delivers on time and on budget.



Marcus Varian
Site Supervisor

Marcus plays an integral role for the completion of projects by planning, organising and ensuring all tasks are completed to the highest quality. Marcus oversees all sub-contractors & site team.



Sarah Green
Office Manager/OHSE

Sarah maintains the internal Management, quality & OHSE systems. Sarah's responsibilities also include, payroll, accounts & the day-to-day running of the office.

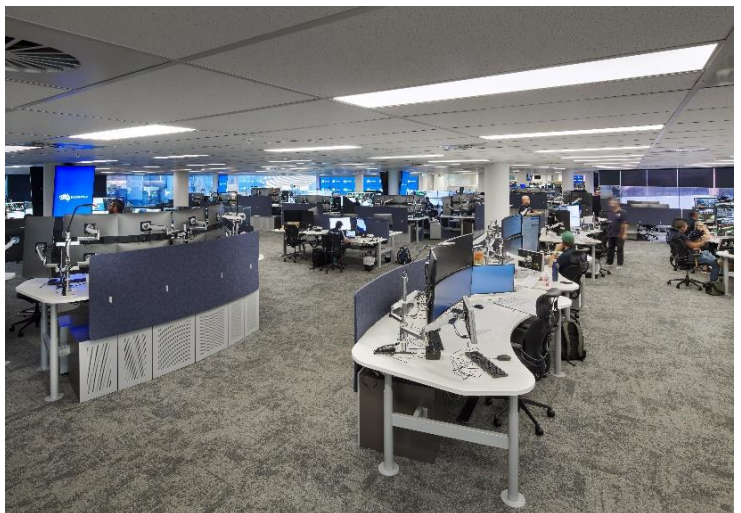
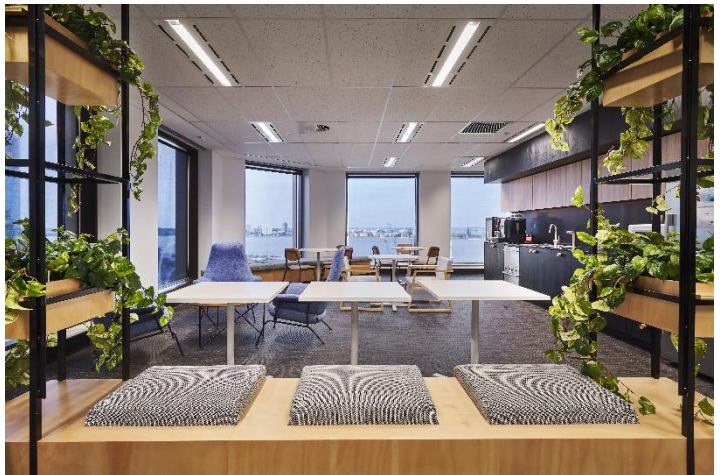
PROJECTS PHOTOGRAPHS

CURRENT AND RECENTLY COMPLETED FITOUT PROJECTS

Finlay Group Construction has won and successfully delivered multimillion-dollar contracts and has built a reputation amongst industry peers, architects and consultants as being the innovative future of the industry.

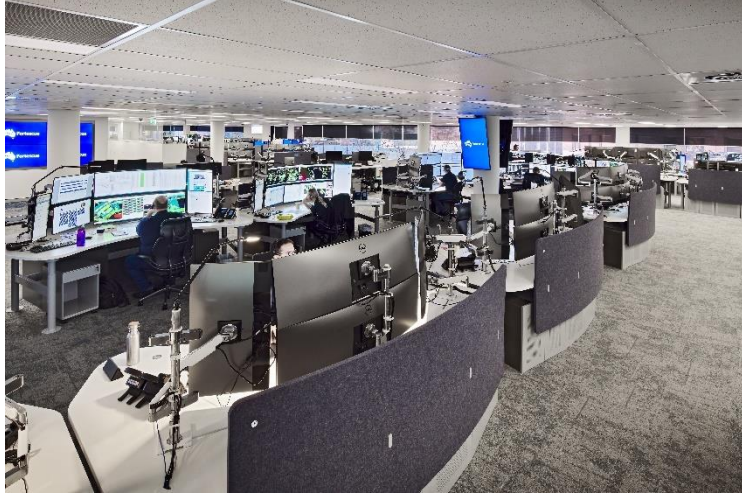
Some of the projects in progress or completed are:

- Fortescue Metals Group – Innovation Centre Belmont \$2M
- Fortescue Metals Group – Integrated operations Centre, Perth \$3.5M
- Vermilion Oil & Gas Corporate Fitout \$600,000
- Crown Towers Salons \$1M
- The Pretzel Shop Carousel Shopping Centre D&C
- Chancery House Lobby Refurbishment \$1.5M
- Mixed Development North Perth, 37 apartments and 4 commercial tenancy's \$14.8M
- New Children's Hospital, Medical, Surgery & Corporate Offices \$33M
- Shell House 11 floors Corporate Fitout \$11M
- Crown Resort Carbon Bar Refurbishment \$1.1M
- Luxury Apartments, 62 Marine Parade, Cottesloe \$4.5M
- WAIMR QEII 9 floors including 4 laboratories' and Corporate Offices \$3.6M
- Acacia Prison Internal Fitout \$3.1M
- Crown Perth Office Refurbishments \$4.5M
- Goodchild's Design & Construct Office Refurbishment \$750,000
- Holyoake Drug & Rehabilitation Refurbishment \$1.4M
- Large retail works for Good Guys Chains \$1.6M
- BER Metropolitan Schools \$1.35M
- Albany Entertainment Centre \$2.5M



PROJECTS PHOTOGRAPHS

Fortescue Metals Group



PROJECTS PHOTOGRAPHS

Vermillion Oil & Gas



PROJECT PHOTOGRAPHS

Rose on Angove



PROJECT PHOTOGRAPHS

Crown Theatre Grab & Go



Crown Towers Salons



PROJECT PHOTOGRAPHS

Chancery House

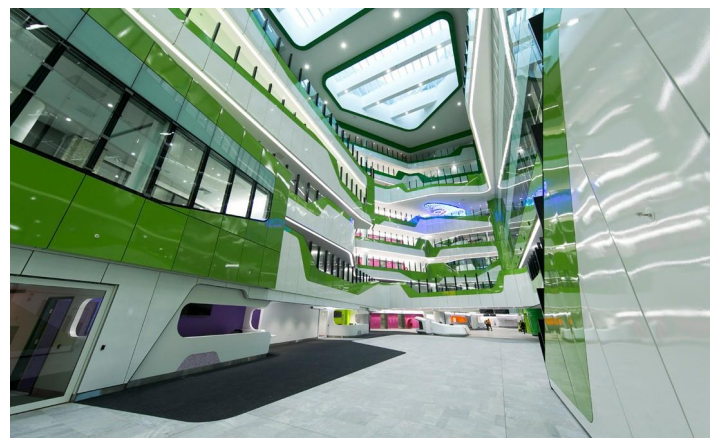


PROJECT PHOTOGRAPHS

The Pretzel Shop Carousel Shopping Centre



New Children's Hospital



PROJECT PHOTOGRAPHS

Shell House



WA Institute of Medical Research

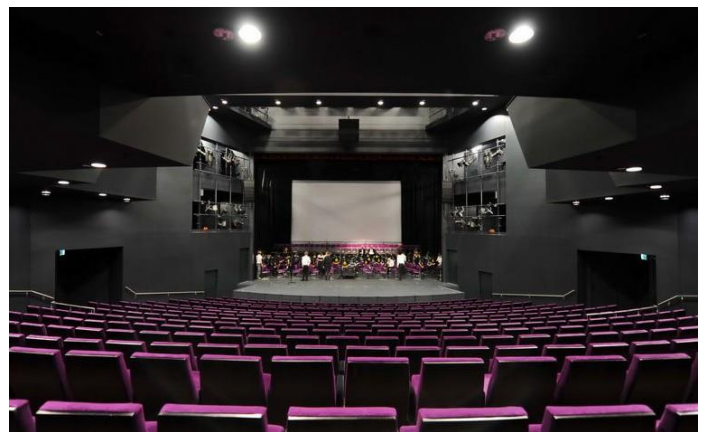


PROJECT PHOTOGRAPHS

Holyoake Midland



Albany Entertainment Complex



PROJECT PHOTOGRAPHS

Acacia Prison



Marine Parade, Cottesloe



OUR PARTNERS

For company & project references please contact our office.



Unit 3, 1 President Street, Welshpool WA 6106
Phone: (08) 9470 5377
Fax: (08) 9470 5477
Email: xavier@finlaygroup.com.au
Website: www.finlaygroup.com.au
ABN: 37 609 720 158 Builders Reg.: 102236